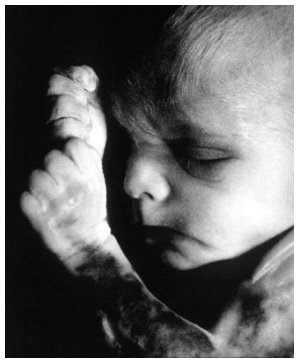




# Poverty drives abortion choices that kill babies.

<https://www.guttmacher.org/media/infographics/abortion-concentrated-among-poor2.html>

Women in poverty turn to abortion at a rate FIVE TIMES that of women who do not live in poverty.



Women in poverty can be so desperate because of crisis pregnancies that they will spend rent, utilities, and food money to pay for abortions.

42% of women having abortions are poor.

While abortion rates for women with incomes twice the poverty level are declining, abortion rates for women with incomes below 2x the poverty line are increasing.



In a 2005 study, 73% of women choosing abortion said financial desperation drove their decision. A 2008 study had 69% of women choosing abortion had incomes below 2x the poverty level.

<http://www.usccb.org/about/pro-life-activities/respect-life-program/2014/poverty-and-abortion.cfm>

The 2008-2009 recession drove up abortion rates among poor women.

<http://www.ontheissuesmagazine.com/pdfs/AbortionomicsFINALReport.pdf>

**The question for the Legislature is:**

## How many babies will you slaughter as you balance your budget on the backs of the poor?

**Woe to those who enact unjust statutes and who write oppressive decrees, depriving the needy of justice and robbing my people's poor of their rights, making widows their plunder, and orphans their prey! What will you do on the day of punishment, when ruin comes from afar? To whom will you flee for help? Isaiah 10: 1-3**

**All of the pictures above are of children who died by abortion.**

A public spiritual service from the Oscar Romero Catholic Worker Community, Oklahoma City. 405-200-8155; robert@justpeace.org.

Copying and distribution of this message is permitted and encouraged.

w w w . j u s t p e a c e . o r g